



- Period property in Totterdown
- One mile from Temple Meads Station
- Two bedrooms and first floor bathroom

- Two reception rooms
- Open fireplace and wood burning stove
- Wonderful open plan kitchen / diner

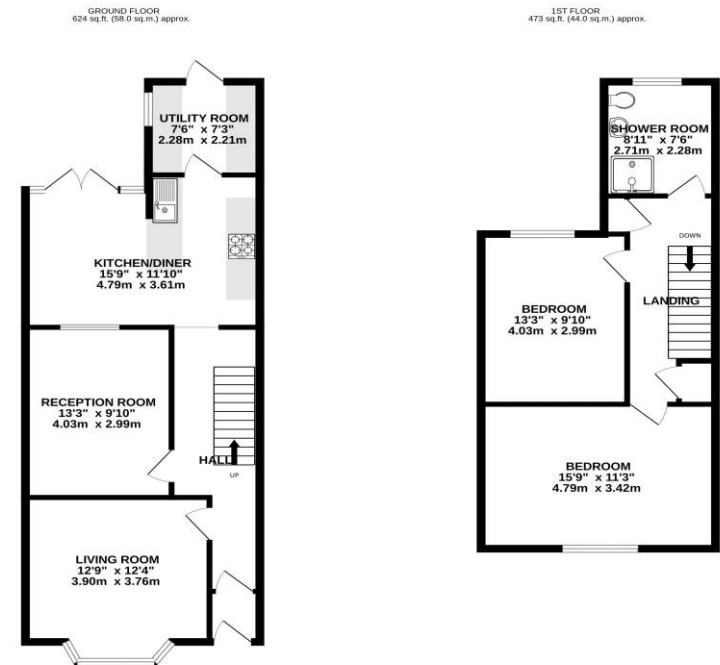
Introducing a charming two-bedroom Victorian terrace nestled in the heart of Totterdown, Bristol – a picturesque and sought-after neighborhood renowned for its historic charm and vibrant community atmosphere.

As you step inside, the welcoming entrance hall sets the tone with its stripped wooden floorboards. The two reception rooms exude a sense of space and warmth, with plenty of room for relaxation and entertaining. The living room has an open fireplace, stripped floorboards and bay window with A rated timber sash windows. The rear reception also has stripped floors but benefits from a wood burning stove and has a window that looks onto the kitchen / diner.

The heart of this home lies in its kitchen/diner, designed for entertaining and perfect for those who love to host. The kitchen features modern appliances, ample storage, and stylish finishes. The dining area is covered with a pitched glass roof allowing in loads of light and enjoying views over the rear garden. Beyond the kitchen is a handy utility. Upstairs, two generously sized bedrooms await, each providing a cozy and private retreat. The master bedroom is a tranquil haven, while the second bedroom offers versatility for guests or as a home office. The bathroom offers a modern suite with large walk in shower.

Outside, a private garden completes the picture, providing a tranquil outdoor oasis for relaxation or alfresco dining.

This beautifully renovated Victorian terrace in Totterdown offers the perfect blend of classic charm and contemporary convenience, making it an ideal choice for those seeking a comfortable and characterful home in this vibrant Bristol neighborhood.



TOTAL FLOOR AREA - 1097 sq.ft. (101.9 sq.m.) approx.
Whilst every attempt has been made to ensure the accuracy of the floorplan contained here, measurements of floors, windows, rooms and any other items are approximate and no responsibility is taken for any error, omission or mis-statement. This plan is for illustrative purposes only and should be used as such by any prospective purchaser. The layout, fixtures and appliances shown here are not to be relied on or guaranteed, as to their availability or efficiency may be given.
 Made with Metropix ©2023

Please note:

1. The photographs may have been taken using a wide angle lens.
2. Any services, heating systems, appliances or installations referred to in these particulars have not been tested and no warranty can be given that these are in working order. Whilst we believe these particulars to be correct we would be pleased to check any information of particular interest to you.
3. We endeavour to make our sales details accurate and reliable, but they should not be relied on as statements or representations of fact and they do not constitute any part of an offer or contract. The seller does not make any representation or give any warranty in relation to the property, and we have no authority to do so on behalf of the seller.
4. Please contact us before viewing the property. If there is any point of particular importance to you we will be pleased to provide additional information or to make further enquiries. We will also confirm that the property is still available. This is particularly important if you are contemplating travelling some distance to view the property.
5. Any floor plans provided are not drawn to scale and are produced as an indicative rough guide only to help illustrate and identify the general layout of the property.
6. Any reference to alterations to, or use of, any part of the property is not a statement that any necessary planning, building regulations, listed buildings or other consents have been obtained. These matters must be verified by any intending buyer.